

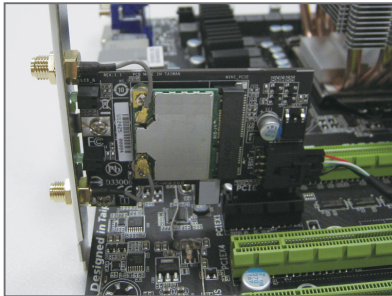
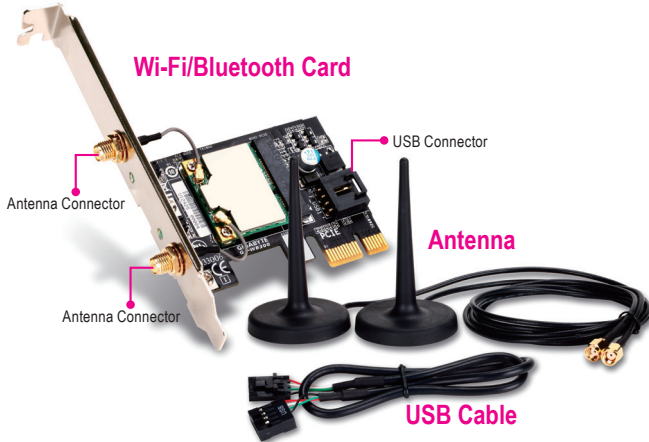
# **GC-WB300D**

# **GC-WB150**

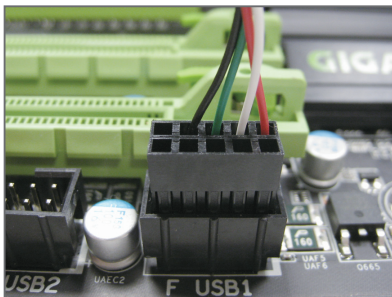
**User's Manual**

12WE6-WIFIBT-30AR

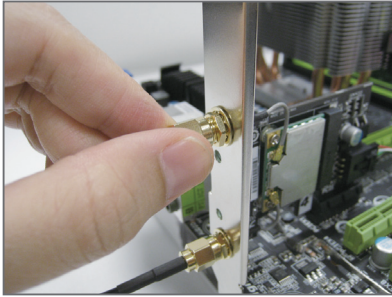
## Chapter 1 Installing the Wi-Fi/Bluetooth Card



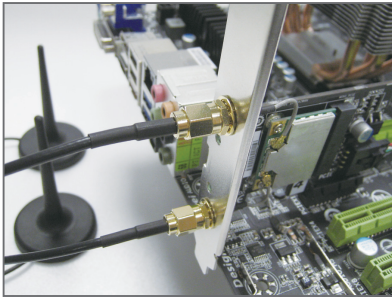
Step 1:  
Install the Wi-Fi/Bluetooth card in a PCI Express x1 slot. Connect one end of the USB cable to the USB connector on the Wi-Fi/Bluetooth card.



Step 2:  
Connect the other end of the USB cable to the F\_USB connector on the motherboard.



Step 3:  
Tighten the two antenna cables to the antenna connectors on the Wi-Fi/Bluetooth card respectively.



Step 4:  
Then move the antennas to a place where the signal is good.

## Chapter 2 Installing the Drivers and Utilities


### 2-1 Installing the Drivers and Utilities


After installing the Wi-Fi/Bluetooth card, install the drivers and utilities in the operating system. Insert the included driver disk and when the autorun screen appears, install all of the items that are listed. Follow the on-screen instructions to install the drivers and utilities in sequence.

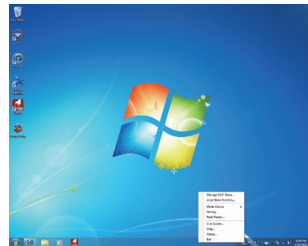


### 2-2 Using the Wi-Fi Share Utility

The Wi-Fi Share utility allows you to configure how your Wi-Fi/Bluetooth card will act. First it can turn your computer into a virtual wireless access point (Virtual Router Mode), which allows Wi-Fi-capable computers or mobile devices to access the Internet through the virtual wireless access point. Second, it can be configured to let your computer share data to another computer by simply dragging the data from your computer to the target computer (Wi-Fi Share Mode). Third, it surely can be used as a normal wireless LAN card (Wi-Fi Mode Only).

 The Wi-Fi Share utility is supported in Windows 7 only.

After the installation, the Wi-Fi Share icon  will appear in the notification area. Right-click this icon to display configuration options.



#### Option Descriptions

Option	Description
Manage Wi-Fi Share	Opens the Wi-Fi Share Manager
Local Share Directory	Goes to the directory where shared files are located (Wi-Fi Share Mode)
Mode Choice	Selects which mode to operate
Setting	Configures further settings depending on the mode selected
Reset Router	Reset the Wi-Fi Share utility
Live Update	Updates Wi-Fi Share online
Help	Displays the help file
About	Displays the Wi-Fi Share version
Exit	Exits Wi-Fi Share

## Mode Selection

Wi-Fi Share provides three modes for users to select as follows:

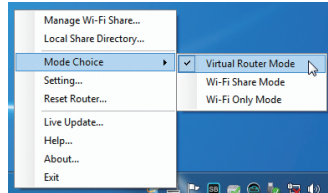
### A. Virtual Router Mode

The Virtual Router Mode turns your computer into a virtual wireless access point (WAP). Refer to the steps below for detailed configurations.

#### Configuring your computer:

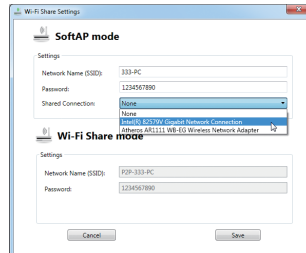
##### Step 1:

Right-click the **Wi-Fi Share** icon  in the notification area and select **Mode Choice** > **Virtual Router Mode** to turn your computer into a virtual wireless AP. Then select **Setting**.



##### Step 2:

When the **Wi-Fi Share Settings** dialog box appears, select a currently running network connection you want to share from the **Share Connection** list. Then click **Save**. The **Password** represents the network security key which is required when other computer wants to access the Internet through the virtual wireless AP. You can keep the default password or create your own one.



#### Configuring the computer that wants to access the Internet through the virtual wireless AP:

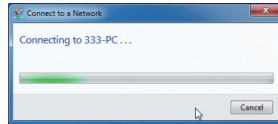
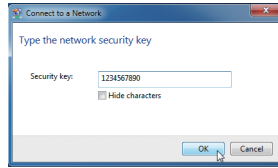
##### Step 1:

Left-click the **Internet Access** icon in the notification area. When the **Currently connected to** list appears, select the virtual wireless AP you want to connect to and click **Connect**.

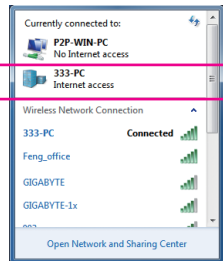


**Step 2:**

When the **Connect to a Network** dialog box appears, enter the security key of the network connection the virtual wireless AP is sharing and click **OK**.


**Step 3:**

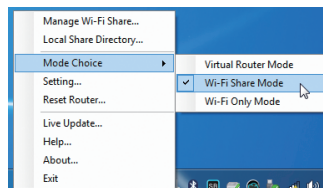
After the connection, the **Currently connected to** list shows that this computer is currently using the network connection shared by the virtual wireless AP.

**B. Wi-Fi Share Mode**

The Wi-Fi Share Mode allows two computers with Wi-Fi Share Mode enabled to share files to each other. Note: Be sure to turn off the firewall on both computers before using Wi-Fi Share Mode.

**Step 1:**

Make sure the two computers are installed with the Wi-Fi Share utility and have Wi-Fi Share Mode enabled. On the desktop of the source computer, right-click the Wi-Fi Share icon  in the notification area and select **Mode Choice > Wi-Fi Share Mode**. Then select **Manage Wi-Fi Share** to open the Wi-Fi Share Manager.

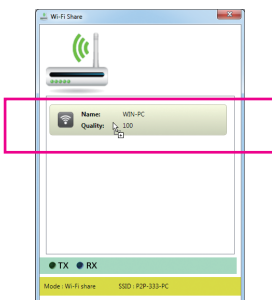


**Step 2:**

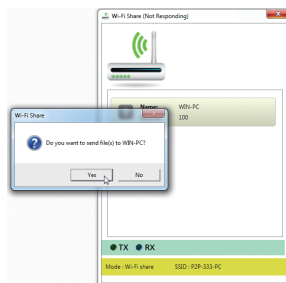
The Wi-Fi Share Manager will display the other computer with Wi-Fi Share Mode enabled (the target computer).

**Step 3:**

Go to the directory where the file/folder that you want to share is located. Drag the file/folder to the target computer displayed on the Wi-Fi Share Manager.

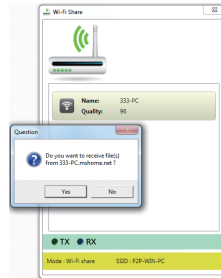
**Step 4:**

When asked whether to send the file/folder to the target computer, click **Yes**. The **TX** light will be on when the file/data is being sent.

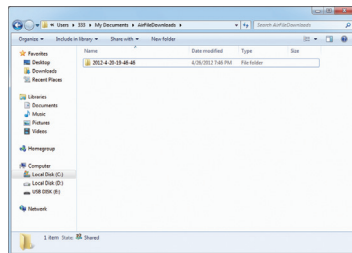


**Step 5:**

The confirmation message will also appear on the target computer, asking whether to accept the file/folder from the source computer. Click **Yes** to confirm. You must respond in 15 seconds. The **RX** light will be on when the file/data is being received.

**Step 6:**

The data will be automatically stored to a folder in the **My Documents**\AirFileDownloads directory in the target computer, which is named according to the receiving time. To directly access this directory later, you can also right-click the Wi-Fi Share icon in the notification area and select **Local Shared Directory**.

**C. Wi-Fi Mode Only**

In this mode, the Wi-Fi/Bluetooth card is set as a normal wireless LAN card and needs to connect to a wireless access point to get Internet connection.



## 2-3 Using the Cloud Station Utility

The Cloud Station utility allows GIGABYTE's iOS APPs to communicate, share resources, and control your desktop PC systems. Two GIGABYTE's unique iOS APPs are available now: EasyTune Touch and PictureView, both of which can be downloaded from the Apple store for free.

### System Requirements:

- Windows 7
- i-Tunes
- iPhone 4, iPhone 3, and iPad series (iPhone 3 and iPad series only support Wi-Fi connection)

### EasyTune Touch:



EasyTune Touch is a simple and easy-to-use application that allows users to remotely control their system through Apple devices, including iPhone and iPad. Detailed functions are as follows:



### Options Descriptions


Option	Description
Tuner	Allows you to change CPU/memory frequency and voltage settings.
System Information	Displays the system information, including the CPU, motherboard, and memory.
Hardware Monitor	Allows you to monitor hardware temperature, voltage, and fan speed.
Remote Control	Allows you to reboot or shut dwn your computer.
Quick Boost	Provides you with 3 levels of automatic system tuning.
Connection	Selects how iPhone/iPad will connect to your computer.

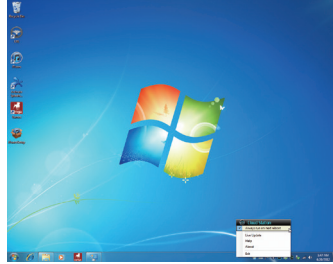
### PictureView:



The PictureView application is designed to allow users to quickly and effortlessly share photographs from their iOS device directly to their computer. By simply selecting a photo from the iOS device's picture library, the user will then be instantly able to see it on their PC desktop.

### Using the Cloud Station:

After the Cloud Station utility is installed, the Cloud Station icon  will appear in the notification area. You can right-click this icon and select **Always run on next reboot** to launch this utility each time you reboot the computer. To use EasyTune Touch and PictureView on your iPhone/iPad, you must launch the Cloud Station utility on your computer first.



### Three ways of connection:

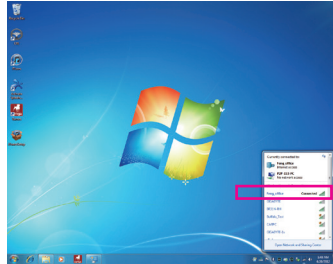
Before using EasyTune Touch and PictureView, use one of the three ways below to connect your Apple devices to the target computer: Wi-Fi, Bluetooth, and USB connections. iPhone 3 and iPad series only support Wi-Fi connection and iPhone 4 series supports all of the three connections. Below we use iPhone 4 as the demonstration Apple device. (Make sure i-Tunes is installed first.)

#### A. Wi-Fi Connection:

Make sure your iPhone and computer are using the same network connection.

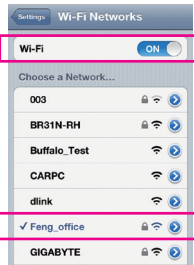
Step 1:

Make sure your computer is connected to a network connection.



Step 2:

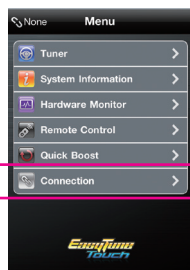
On your iPhone, go to **Settings>Wi-Fi** and turn on the Wi-Fi function. Then choose the same network connection that your computer is currently using.



## Using EasyTune Touch

### Step 1:

Go to the main menu of the EasyTune Touch application on your iPhone. Select **Connection**.



### Step 2:

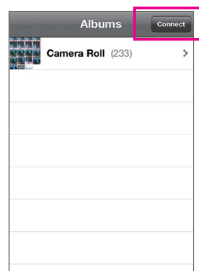
On the **Connection** page, select **Wifi**. iPhone will begin to search for the computer using the same network connection. When the computer is displayed, select it. Then return to the main menu of the EasyTune Touch application. Now you are able to use the EasyTune Touch functions to remotely control the target computer via the iPhone or check hardware information.



## Using PictureView

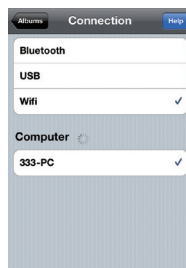
### Step 1:

Go to the main screen of the PictureView application. In the photo gallery, select **Connect**.



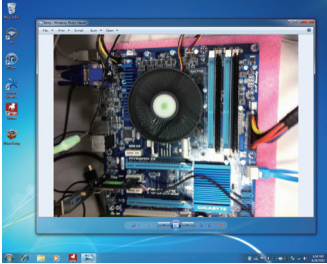
### Step 2:

On the **Connection** page, select **Wifi**. iPhone will begin to search for the computer using the same network connection. When the computer is displayed, select it. Then return to photo gallery.



**Step 3:**

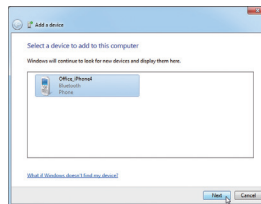
Click the photo you want to share and your photo will be shown instantly on the desktop of the target computer.

**B. BlueTooth Connection:****Step 1:**

On your iPhone, go to **Settings > Personal Hotspot** and turn on this function. Then go to **Settings > General > Bluetooth** to turn Bluetooth on.

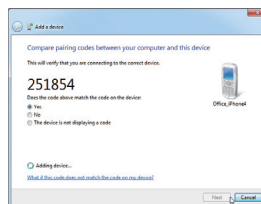
**Step 2:**

Now you have to pair the iPhone with your computer. In the operating system of your computer, go to **Control Panel > Devices and Printers**. Select **Add a device**. Your computer will look for Bluetooth devices and display them on the screen. When the iPhone is displayed, select it and click **Next**.

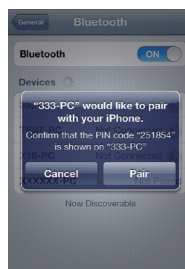


**Step 3:**

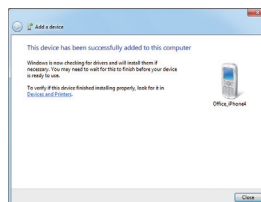
A pairing code will appear on the screen. Click **Next**. Your iPhone will display a message with the pairing code for you to confirm as well (refer to the next screenshot).

**Step 4:**

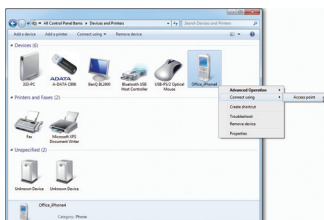
When the iPhone displays the pairing code, press **Pair** to confirm. After the pairing is successful, your iPhone will show that it has been connected to your computer.

**Step 5:**

Your computer will show that the iPhone has been added to your computer successfully. Click **Close** to return to the **Control Panel > Devices and Printers** window.

**Step 6:**

Look for your iPhone device, right-click it, and select **Connect using > Access Point** to complete the configuration.

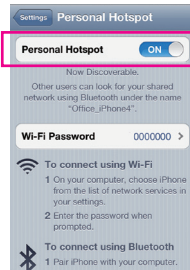


Now, you are ready to use EasyTune Touch or PictureView. Refer to the instructions on configuration Wi-Fi connection and select **Bluetooth** connection.

### C. USB Connection:

#### Step 1:

On your iPhone, go to **Settings > Personal Hotspot** to turn on this function.

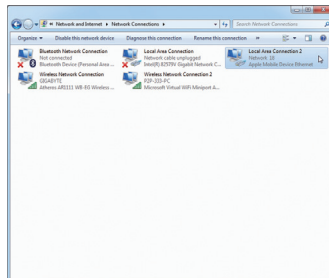


#### Step 2:

Connect your iPhone to your computer using the iPhone USB cable.

#### Step 3:

After the iPhone is connected to your computer, go to **Control Panel > Network and Sharing Center > Change adapter settings**. Make sure **Apple Mobile Device Ethernet** is present. If not, re-check the connection.



Now, you are ready to use EasyTune Touch or PictureView. Refer to the instructions on configuration Wi-Fi connection and select **USB** connection.